



Detroit District
US Army Corps
of Engineers®

One Corps Serving the Army and the Nation

US Army Corps of Engineers

Detroit District

Erie Pier Briefing

Steven Brossart

19 November 2014



Detroit District
US Army Corps
of Engineers®

Erie Pier Briefing

Erie Pier Beneficial Reuse Facility

- The Erie Pier site is approximately 87 acres in size and is utilized to place dredged materials from the Duluth/Superior Harbor maintenance dredging operations.
- The Erie Pier site is owned by the Duluth Seaway Port Authority and managed by the USACE. Once the dredge material is brought to the site it is the property of the Port Authority.
- The Erie Pier site was constructed in 1978 with an estimated capacity of 1.0 million CY and a 10 year life expectancy.
- The site was expanded in 1989, 1990, 1997, 1999 and 2012, currently has received over 4.0 million CY with 850,000 CY being beneficially utilized.
- The site has an estimated life span of 4 years.



Detroit District
US Army Corps
of Engineers®

Erie Pier Briefing

Erie Pier Beneficial Reuse Facility

- A hydraulic separation operation has been utilized by the USACE since 1988 to transport the material into Erie Pier and to segregate the dredge material by grain size.
- The coarse material from the site has been beneficially utilized since 1988 primarily in road and general construction. To date approximately 800,000 CY of coarse material has been beneficially utilized.
- Duluth/Superior harbor stakeholders developed the Erie Pier Management Plan to develop testing parameters for beneficial use of the fine materials.
- Erie Pier has been modified over the last few years so fine dredge material is also beneficially utilized. Fines from Erie Pier are typically utilized to rehabilitate land and water areas impacted by human activities. To date approximately 50,000 CY of fine material have been beneficially utilized. Beneficial uses have included Iron Mining land restoration, aquatic harbor restoration, landfill cover, golf course improvements and impaired industrials site rehabilitation.



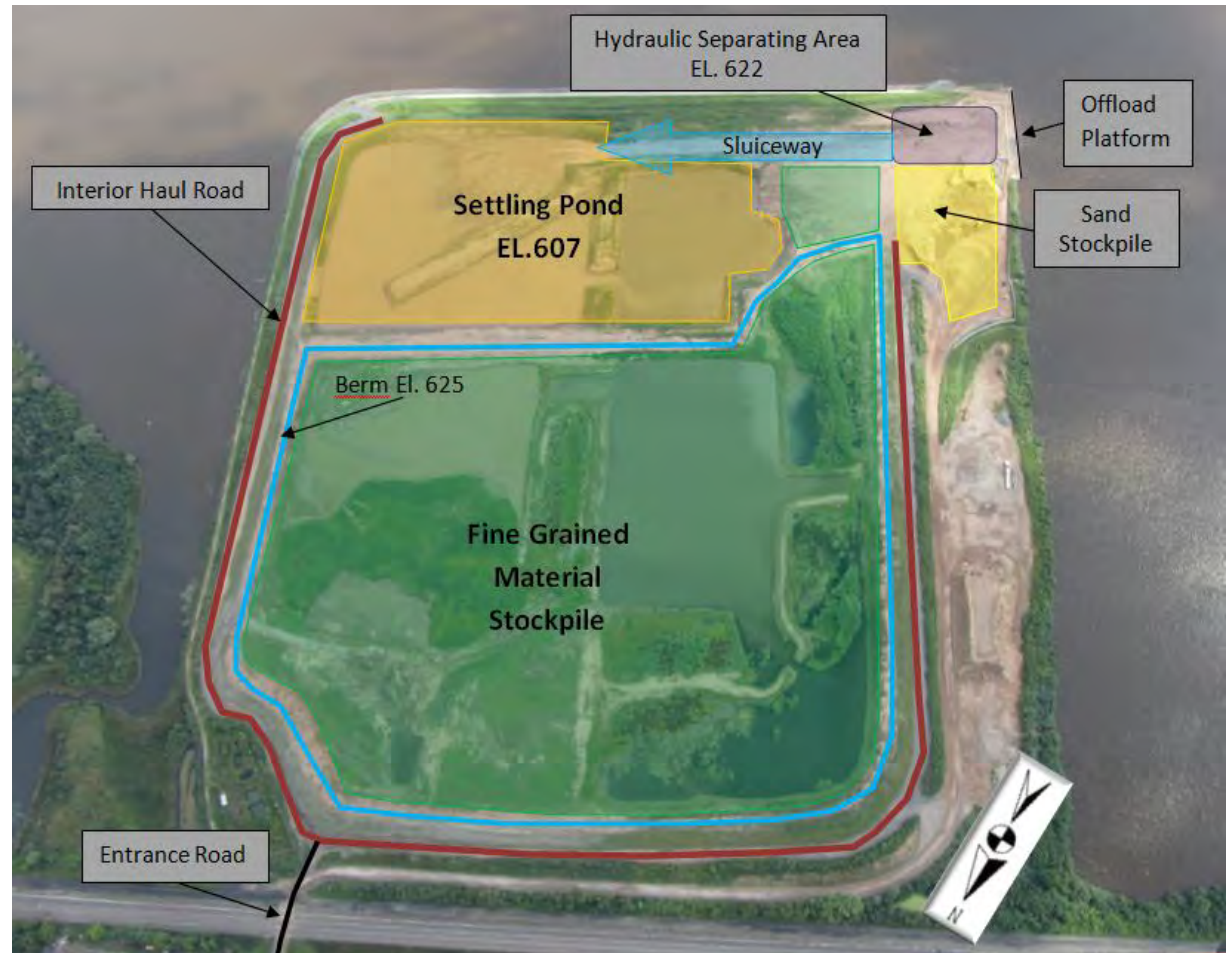
Duluth Area Office Briefing

Erie Pier Facility

Hydraulic Separation Process

Overview of Operations

1. Offload Material
2. Hydraulically Separate Material
 - Sand “falls out” in separating area
 - Water carries fine grained material to settling ponds
3. Create Stockpiles
 - Sand is moved away from separating area and positioned into stockpiles
 - Fine grained material is excavated from ponds, stockpiled and tested.
4. Truck Material Offsite for Beneficial Re-Use





Detroit District
US Army Corps
of Engineers®

One Corps Serving the Army and the Nation

Erie Pier

Hydraulic Separation Operation





Detroit District
US Army Corps
of Engineers®

One Corps Serving the Army and the Nation

Duluth Area Office Briefing

MN Sea Grant





Detroit District
US Army Corps
of Engineers®

One Corps Serving the Army and the Nation

Questions?